

# FFS Series

Stainless steel flat face couplers made to the ISO 16028 Standard dimensions

## Introduction

AKJia's FFS Series stainless steel flat face couplers incorporate all the benefits of the carbon steel FF Series couplers, while being perfectly suited for corrosive fluids and environments.

## Construction

- AISI 304 Stainless Steel, also available 316 stainless steel
- Fitted with Viton seals - FKM (Other seals available on request)
- Also available in carbon steel (See FF Series)

## Features

- Safety locking sleeve fitted as standard to prevent accidental disconnection
- Flat faces are easily wiped clean
- Allows for minimal inclusion of air and contaminants during connection
- Flat face design prevents fluid loss during disconnection
- Bidirectional flow

## Application

- Corrosive fluids and environments
- Marine
- Oil and gas
- Chemical
- Pharmaceutical
- Nuclear



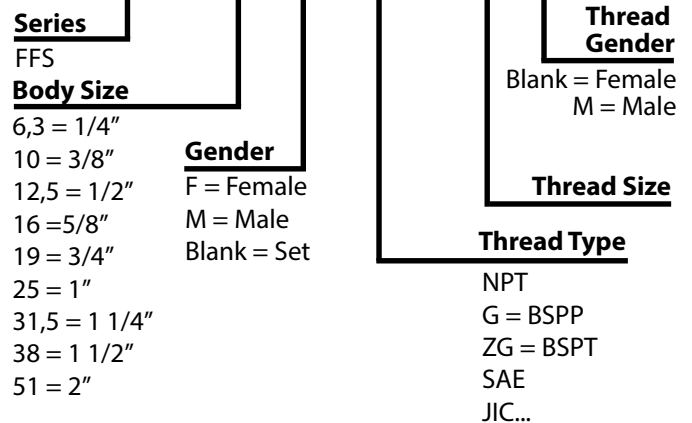
## Specifications

Seal Material	Min. Temp		Max. Temp	
	°C	°F	°C	°F
Nitrile seals*	-40°C	-40°F	106°C	223°F
FKM (Viton) seals	-20°C	-4°F	200°C	392°F

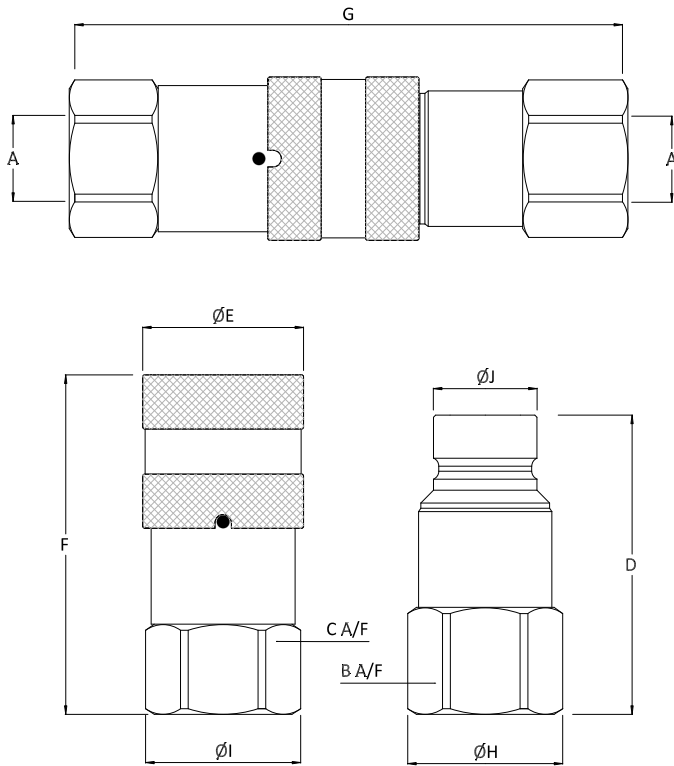


## Product Number Naming Rules

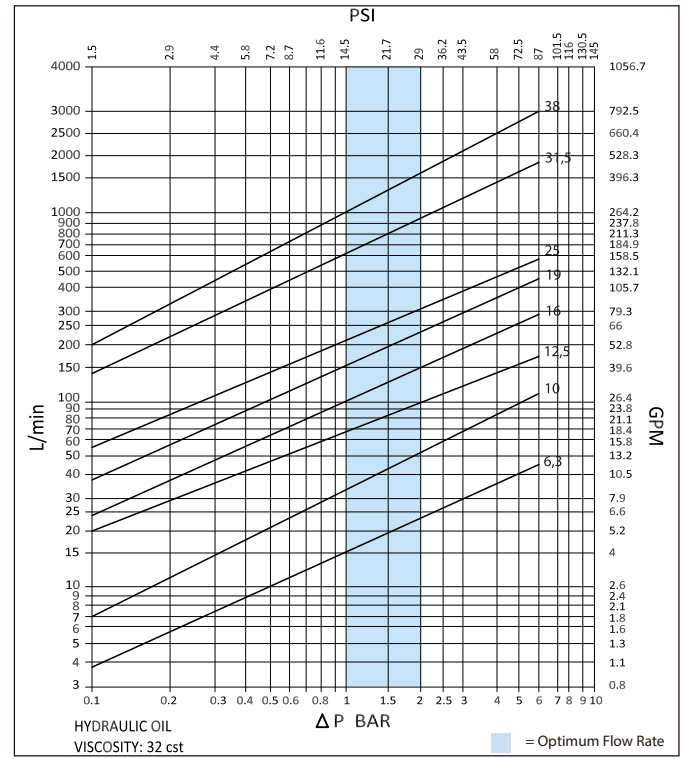
### FFS - 6,3 F NPT 1/4



**Drawing**



**Pressure Drop Characteristics**



Size	Thread Size (A)	B	C	D	ØE	F	G	ØH	ØI	ØJ	Maximum Working Pressure	Burst Pressure (coupled)	Burst Pressure (Male)	Burst Pressure (Female)	
		Dimensions in mm										Bar			
		Dimensions in inches										Psi			
FFS-6,3	1/4"	22	27	53.8	28	54.3	97	24	29	16.2	350	1300	2600	1600	
		0.9	1.1	2.1	1.1	2.1	3.8	0.9	1.1	0.6	5075	18850	37700	23200	
FFS- 10	3/8"	27	30	60.2	31.8	69.3	113.3	29	32	19.7	350	1900	1400	1000	
		1.1	1.2	2.4	1.3	2.7	4.5	1.1	1.3	0.8	5075	27550	20300	14500	
FFS-10	1/2"	27	30	63.2	31.8	74.2	121.5	29	32	19.7	350	1900	1300	1000	
		1.1	1.2	2.5	1.3	2.9	4.8	1.1	1.3	0.8	5075	27550	18850	14500	
FFS-12,5	1/2"	36	36	71.2	37.8	83.7	137.7	40	40	24.5	350	1600	1100	1000	
		1.4	1.4	2.8	1.5	3.3	5.4	1.6	1.6	1	5075	23200	15950	14500	
FFS-16	3/4"	36	41	73.1	42	83.9	139.8	38.5	45.1	27	350	1600	1100	1000	
		1.4	1.6	2.9	1.7	3.3	5.5	1.5	1.8	1.1	5075	23200	15950	14500	
FFS-19	1"	46	46	84	45.5	99	161.6	50.3	50.2	30	350	1400	1100	1000	
		1.8	1.8	3.3	1.8	3.9	6.4	2	2	1.2	5075	20300	15950	14500	
FFS-25	1 1/4"	55	55	90.4	55	106.2	173.3	59.7	59.7	36	350	1400	1100	1000	
		2.2	2.2	3.6	2.2	4.2	6.8	2.4	2.4	1.4	5075	20300	15950	14500	
FFS-31,5	1 1/2"	70	70	119.8	79	118.5	209.5	77	79	57	350	1000	1000	1000	
		2.8	2.8	4.7	3.1	4.7	8.2	3	3.1	2.2	5075	14500	14500	14500	
FFS-38	2"	80	80	173.4	103	145.5	282.3	106.2	106.2	72.9	250	600	600	600	
		3.1	3.1	6.8	4.1	5.7	11.1	4.2	4.2	2.9	3625	8700	8700	8700	
FFS-51	2"	80	80	173	99	149	275.2	106.2	106.2	106.2	100	400	400	400	
		3.1	3.1	6.8	3.9	5.8	10.8	4.2	4.2	4.2	1451	5805	5805	5805	