

HPC Series

Parker TC Series Interchange High Pressure Application Coupler Introduction

HPC Series couplings are used in high pressure applications with hydraulic and mechanical shock. Steel coupler sleeves and nipple bodies are hardened for resistance to damage. Fluorocarbon seals along with PTFE back up rings provide reliable sealing in high pressures.

Construction

- Available in 3/8 inch size only
- sleeve lock to guard against accidental disconnection
- Rated pressure up to 10,000 psi
- Fluorocarbon seals along with PTFE back up rings provide reliable sealing in high pressures

Features

- Manual sleeve operation
- Fluorocarbon seals
- Standard sleeve lock guards against accidental disconnection
- Positive valve stop prevents flow checking
- Standard end configuration is female pipe thread
- Protective zinc plating with clear trivalent chromate finish

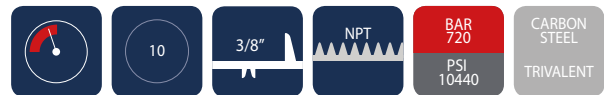
Application

- Hydraulic jacking and house moving equipment
- Construction equipment
- Railway maintenance

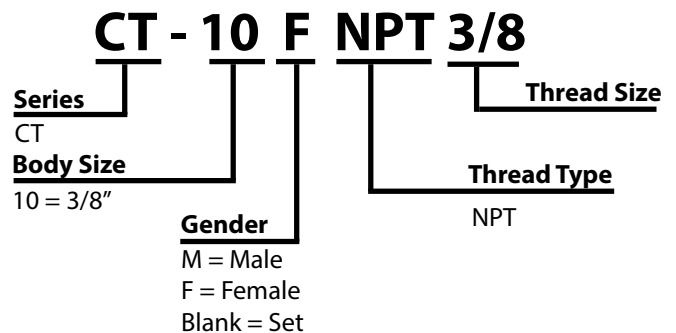


Specifications

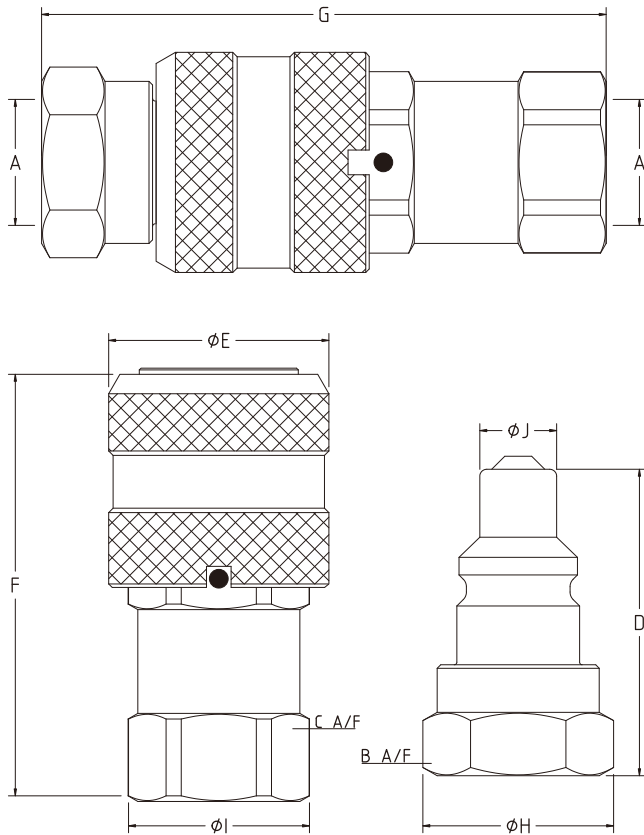
Seal Material	Min. Temp		Max. Temp	
Nitrile seals*	-40°C	-40°F	106°C	223°F



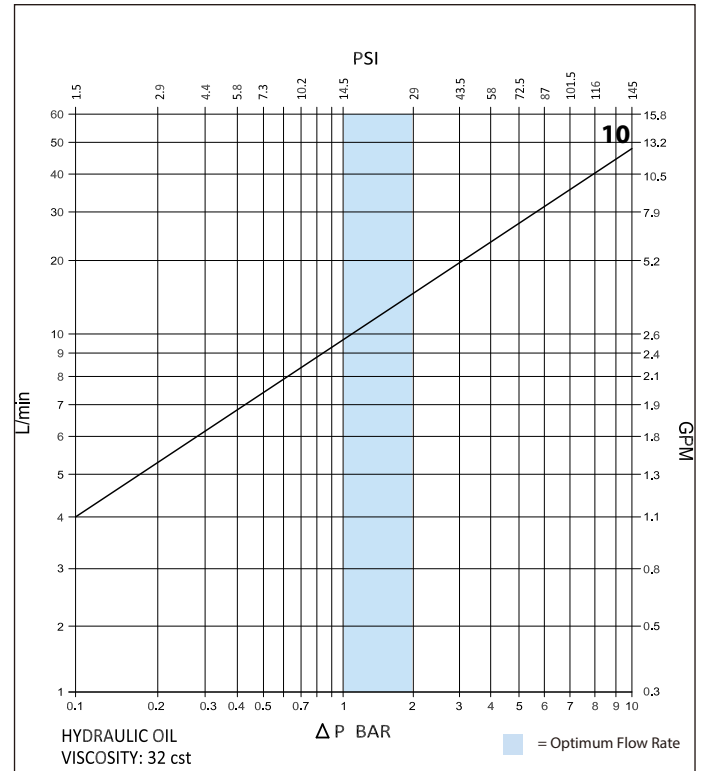
Product Number Naming Rules



Drawing



Pressure Drop Characteristics



Size	Thread Size (A)	B	C	D	ØE	F	G	ØH	ØI	ØJ	Maximum Working Pressure	Burst Pressure (coupled)	Burst Pressure (Male)	Burst Pressure (Female)
		Dimensions in mm									Bar			
		Dimensions in inches									Psi			
CT-10	3/8" NPT	24	24	46.2	32	63	79	26	26	11.2	720	2160	1440	1400
		0.94	0.94	1.82	1.25	2.48	3.1	1	1	0.44	10440	31320	20880	20300