

IBB Series

Brass ISO B couplers made to the ISO 7241:2023 Series B Standard dimensions

Introduction

AKJia's IBB Series brass ISO B couplers incorporate all the benefits of the carbon steel IB Series couplers while providing good corrosion resistance for specific applications.

Construction

- Brass body
- AISI 316 spring and AISI 302 locking ball
- Fitted with Viton seals
- Also available in carbon steel (See IB Series)
- Also available in AISI 316 and AISI 304 stainless steel (See IBS Series)

Features

- Poppet valves have balanced springs
- Locking ball system allows for quick connection
- Bidirectional flow

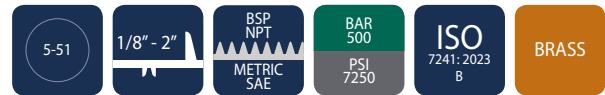
Application

- Cooling systems
- Marine
- Oil and gas
- Chemical
- Pharmaceutical
- Carpet Steam Cleaner



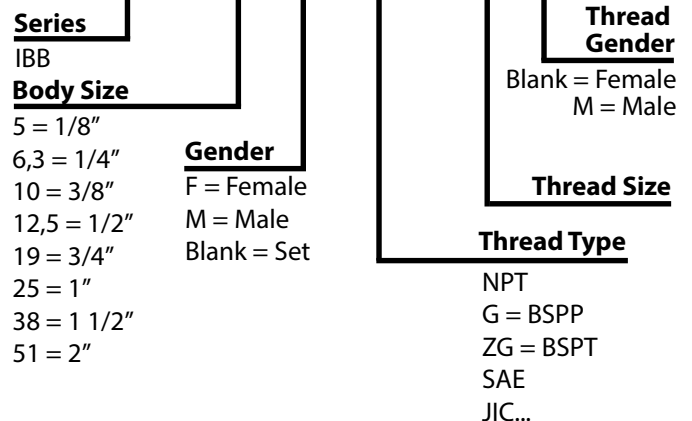
Specifications

Seal Material	Min. Temp		Max. Temp	
FKM (Viton) seals	-20°C	-4°F	200°C	392°F

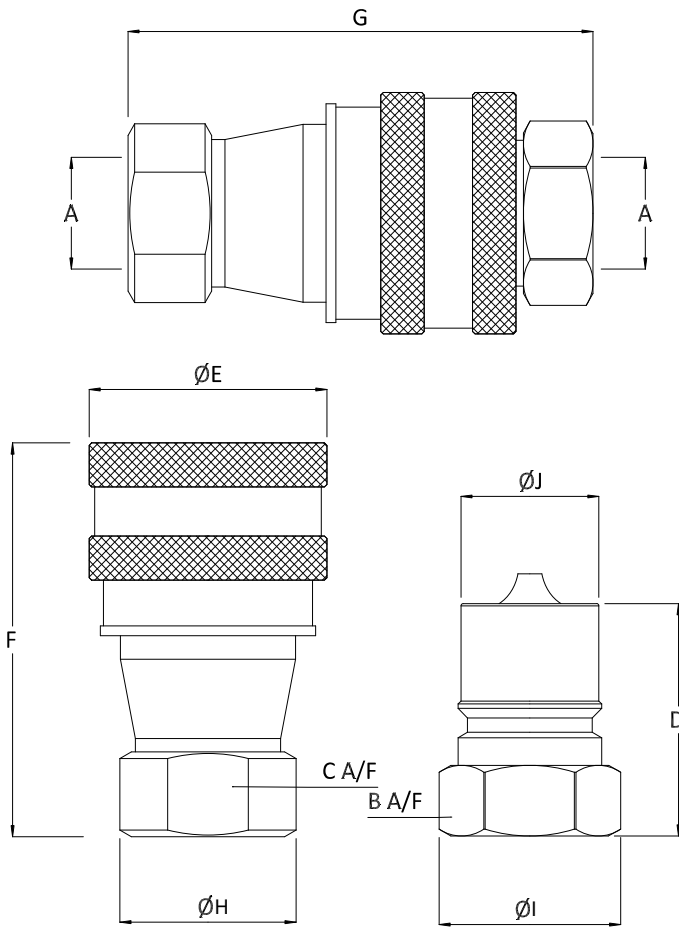


Product Number Naming Rules

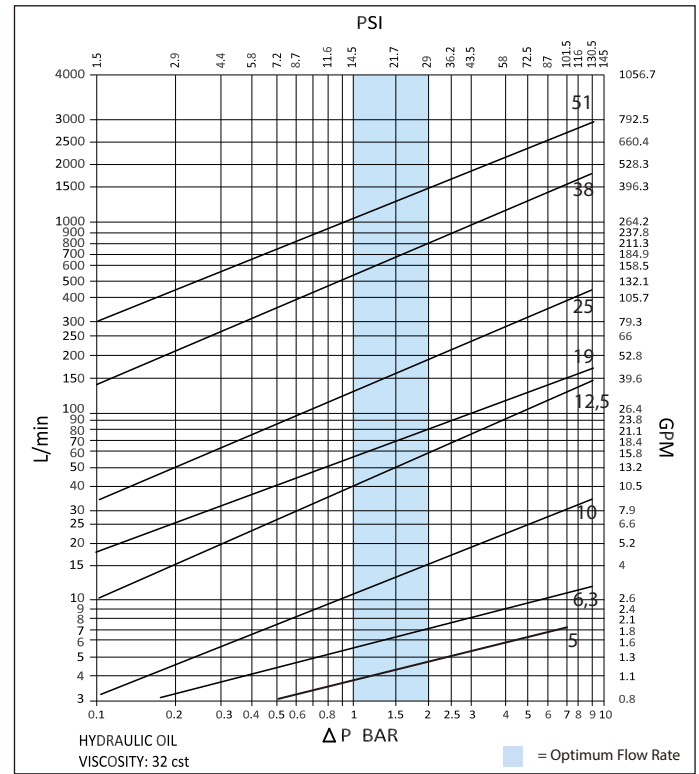
IBB - 6,3 F NPT 1/4



Drawing



Pressure Drop Characteristics



Size	Thread Size (A)	B	C	D	ØE	F	G	ØH	ØI	ØJ	Maximum Working Pressure	Burst Pressure (coupled)	Burst Pressure (Male)	Burst Pressure (Female)
Dimensions in mm											Bar			
Dimensions in inches											Psi			
IBB-5	1/8"	14	14	29	24	48	58.4	16	18	11	210	735	685	735
		0.6	0.6	1.1	0.9	1.9	2.3	0.6	0.7	0.4	3045	10657	9932	10657
IBB-6,3	1/4"	17	19	36	27.1	58.1	72.4	19.3	22	14	210	735	685	735
		0.7	0.7	1.4	1.1	2.3	2.9	0.8	0.9	0.6	3045	10657	9932	10657
IBB-10	3/8"	22	22	40	35	64.8	80.4	25	25	19	180	630	580	630
		0.9	0.9	1.6	1.4	2.6	3.2	1	1	0.7	2610	9135	8410	9135
IBB-12,5	1/2"	27	27	46.6	45	73	92	31.5	35	23.5	180	630	580	630
		1.1	1.1	1.8	1.8	2.9	3.6	1.2	1.4	0.9	2610	9135	8410	9135
IBB-19	3/4"	36	36	52	54.1	88.4	105.5	41.3	40	31.5	140	490	440	490
		1.4	1.4	2	2.1	3.5	4.2	1.6	1.6	1.2	2030	7105	6380	7105
IBB-25	1"	41	41	62	64.5	102	125	47	48	38	140	490	440	490
		1.6	1.6	2.4	2.5	4	4.9	1.9	1.9	1.5	2030	7105	6380	7105