

VVSS Series

Stainless steel high pressure heavy duty screw connect couplers

Introduction

AKJia's VVSS Series stainless steel screw connect couplers are designed for heavy duty applications involving very high pressures and severe pressure pulses. They incorporate all the benefits of the carbon steel VVS Series, while being perfectly suited for corrosive fluids and environments.

Construction

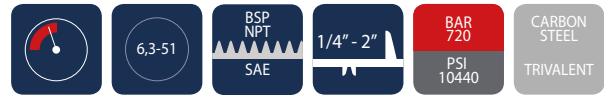
- AISI 316 stainless steel
- Fitted with Viton seals (Other seals available on request)
- Also available in carbon steel (See VVS Series)

Features

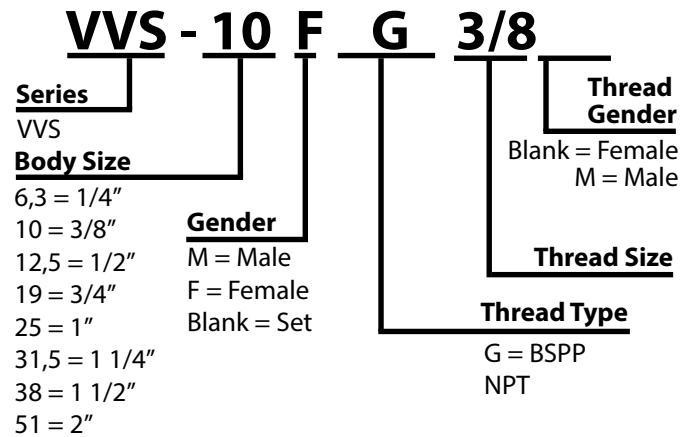
- Screw connect design eliminates brinelling
- Can be connected with up to 50 bar residual pressure in the hydraulic circuit
- Bidirectional flow

Application

- Hydraulic jacks
- Marine
- Oil and gas



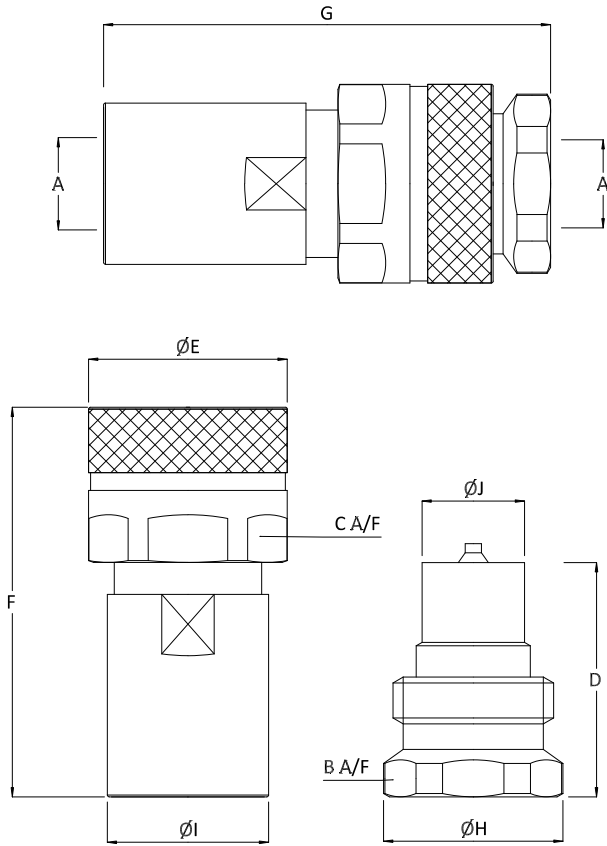
Product Number Naming Rules



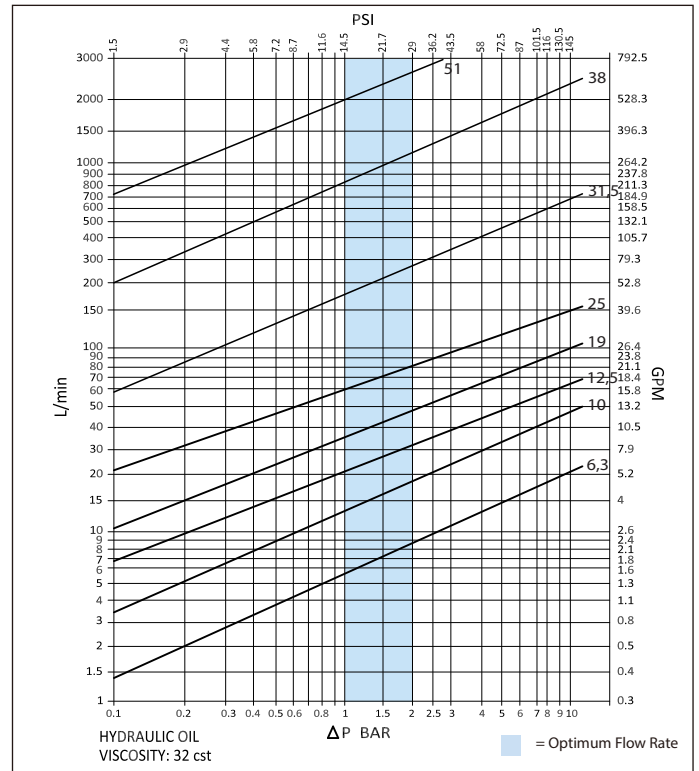
Specifications

Seal Material	Min. Temp		Max. Temp	
	-40°C	-40°F	106°C	223°F
Nitrile seals*				

Drawing



Pressure Drop Characteristics



Size	Thread Size (A)	B	C	D	ØE	F	G	ØH	ØI	ØJ	Maximum Working Pressure	Burst Pressure (coupled)	Burst Pressure (Male)	Burst Pressure (Female)
Dimensions in mm											Bar			
Dimensions in inches											Psi			
VVSS-6,3	1/4"	25	27	43	30	61.5	84.5	27	25	14	700	3700	3700	3800
		1	1.1	1.7	1.2	2.4	3.3	1.1	1	0.6	10150	53650	53650	55100
VVSS-10	3/8"	32	36	48.5	39	69	89.5	35	32	19	650	2600	2300	2000
		1.3	1.4	1.9	1.5	2.7	3.5	1.4	1.3	0.7	9425	37700	33350	29000
VVSS-12,5	1/2"	34	41	53	44	79	103	38	38	20.5	600	2500	2100	2700
		1.3	1.6	2.1	1.7	3.1	4.1	1.5	1.5	0.8	8700	36250	30450	39150
VVSS-19	3/4"	46	50	63	54	97.5	121.5	48.5	44	28	500	2400	2100	1700
		1.8	2	2.5	2.1	3.8	4.8	1.9	1.7	1.1	7250	34800	30450	24650
VVSS-25	1"	50	54.5	72.5	59	112.5	139	54	54	31.5	460	1500	1600	1900
		2	2.1	2.9	2.3	4.4	5.5	2.1	2.1	1.2	6670	21750	23200	27550
VVSS-31,5	1 1/4"	65	74.5	86	80	139.5	167	70	69.5	44	380	1000	1000	1000
		2.6	2.9	3.4	3.1	5.5	6.6	2.8	2.7	1.7	5510	14500	14500	14500
VVSS-38	1 1/2"	80	90	95	98	172	188	83	78.5	53.5	365	1000	900	950
		3.1	3.5	3.7	3.9	6.8	7.4	3.3	3.1	2.1	5292.5	14500	13050	13775
VVSS-51	2"	110	123	118.5	127.5	160	228	115.5	105	82	300	900	900	900
		4.3	4.8	4.7	5	6.3	9	4.5	4.1	3.2	4350	13050	13050	13050