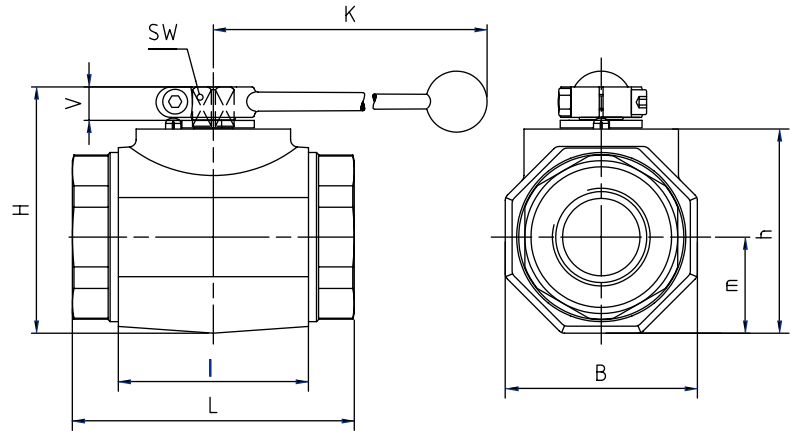


HKM Series

Two-Way High Pressure Forged Housing Ball Valve



General Dimensions

Order Code	I	B	H	h	m	V	SW	K
KHM-DN32	80	81	107	86	40.5	16.5	17	320
KHM-DN40	85	100	124	103	50	16.5	17	320
KHM-DN50	100	118	138	117	59	16.5	17	320

Material Code

Body Material	1 = Steel 3 = Stainless Steel
Ball	1 = Steel 3 = Stainless Steel
ball seals	1 = POM 3 = PTFE 8 = PEEK
control spindle seal connection seal	2 = NBR 3 = PTFE 4 = FKM
Handle	09x = Without Handle 11x = Straight Aluminum

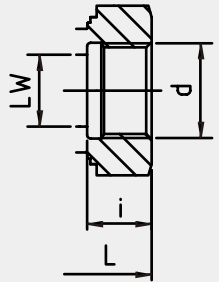
Order Code

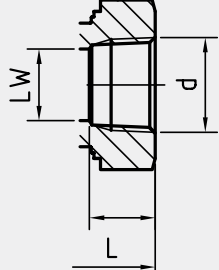
KHM-DN32 - G1 1/4 - 1114 - 09x

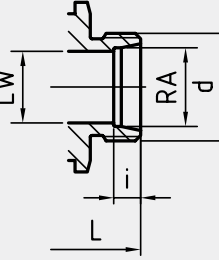
① ② ③ ④ ⑤

- ① Series - KHM
- ② Normal Size
- ③ Thread and Size
- ④ Material Code
- ⑤ Handle Code

KHM Series

Threads	Dimensions(mm)					Weight (kg)	PN (bar)
ISO228-1BSPP Female Thread	Order Code	LW	L	i	d		
	KHM-DN32-G1 1/4	32	111	22	G1 1/4	3.47	420
	KHM-DN40-G1 1/2	38	130	24	G1 1/2	5.67	420
	KHM-DN50-G2	48	140	26	G2	8.14	420

Threads	Dimensions(mm)					Weight (kg)	PN (bar)
ANSI B1.20.1 NPT Female Thread	Order Code	LW	L	i	d		
	KHM-DN32-NPT1 1/4	32	120	22.1	NPT1 1/4"	3.52	420
	KHM-DN40-NPT1 1/2	38	130	22.1	NPT1 1/2"	5.69	420
	KHM-DN50-NPT2	48	140	30.3	NPT2"	8.14	420

Threads	Dimensions(mm)						Weight (kg)	PN (bar)
ISO8434-1-L Male Thread	Order Code	LW	RA	L	i	d		
	KHM-DN32-35L	32	35	136	10.5	M45x2	3.58	420
	KHM-DN40-42L	38	42	147	11	M52x2	5.54	420

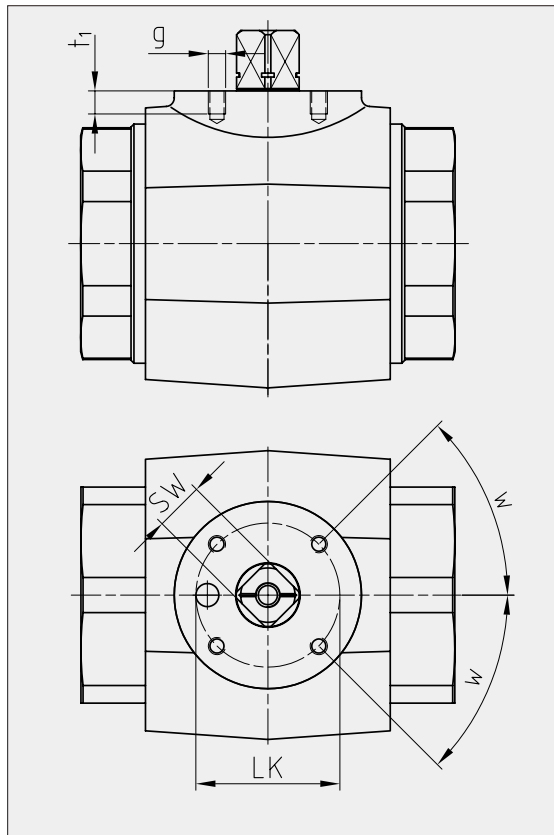
KHM Series

Threads	Dimensions(mm)						Weight (kg)	PN (bar)
ISO8434-1-5 Male Thread	Order Code	LW	RA	L	i	d		
	KHM-DN32-38S	32	38	148	16	M52x2	3.77	420

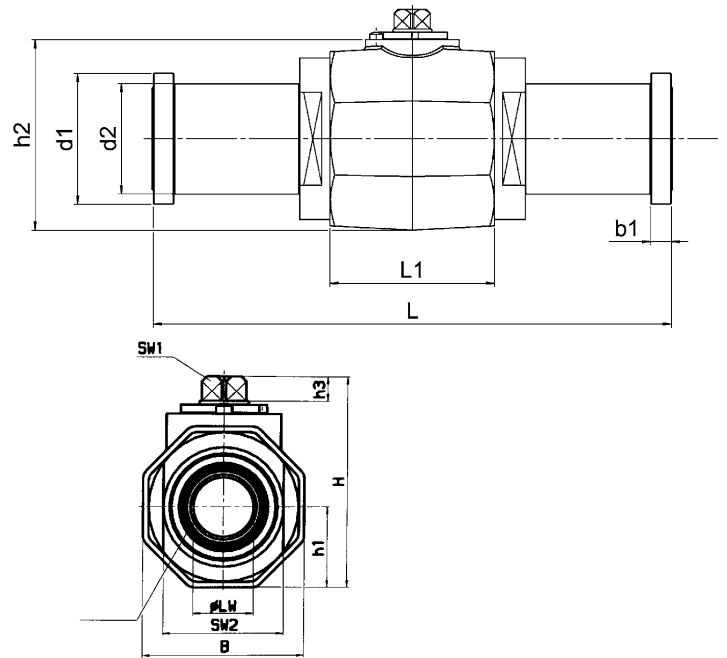
Threads	5Dimensions(mm)					Weight (kg)	PN (bar)
SAE J514/11926-1 Female Thread	Order Code	LW	L	i	d		
	KHM-DN32-1 5/8"UN	30	111	20	1 5/8"-12 UN	3.52	420
	KHM-DN40-1 7/8"UN	38	130	20	1 7/8"-12 UN	5.69	420
	KHM-DN50-2 1/2"UN	45	140	20	2 1/2"-12 UN	7.99	420

Assembling Threads

DN	SW	LK	g	t1	w
32	17	50	M6	8	45°
40	17	50	M6	8	45°
50	17	50	M6	8	45°



KHM Series



General Dimensions

Order Code	DN	LW	L	L ₁	H	h ₁	h ₂	h ₃	B	b ₁	d ₁	d ₂	SW1	SW2	O-ring
KHM-DN32-F3	32	30	191.4	83.4	105.2	40	86.7	12	80	8	50.8	43	17	60	37.7x3.53
KHM-DN40-F3	40	38	231	91	116.2	45	97.7	12	90	8	60.35	50	17	70	47.22x3.53
KHM-DN50-F3	50	48	234	100	134.2	55.5	115.7	12	111	9.6	71.4	62	17	80	56.74x3.53

Material Code

Body Material	1 = Steel 3 = Stainless Steel
Ball	1 = Steel 3 = Stainless Steel
ball seals	1 = POM 3 = PTFE 8 = PEEK
control spindle seal connection seal	2 = NBR 3 = PTFE 4 = FKM
Handle	09x = Without Handle 11x = Straight Aluminum

Order Code

KHM-DN32 - F3 - 1114 - 09x

① ② ③ ④ ⑤

- ① Series - KHB
- ② Normal Size
- ③ Flanges Size
- ④ Material Code
- ⑤ Handle Code