

# PS Series

## Extra heavy duty high flow couplers

### Introduction

AKJia's PS Series The Series is developed for particularly heavyduty hammer applications and for connection of different booms in High Reach Demolition machines for connecting hydraulic lines in DN25 (1 1/4")

### Construction

- Carbon steel with trivalent plating
- Fitted with FKM seals

### Features

- Screw connect design eliminates brinelling
- Once fully connected all internal components are held rigid, significantly reducing the risk of material fatigue
- Can accommodate flow rates up to 1000 L/Min with minimal pressure drop
- Attachment changeover time significantly quicker than with fixed pipes or valves
- Can be connected with up to 50 bar residual pressure in the hydraulic circuit
- Bidirectional flow

### Application

- High reach demolition machines
- Large excavators over 20 tons

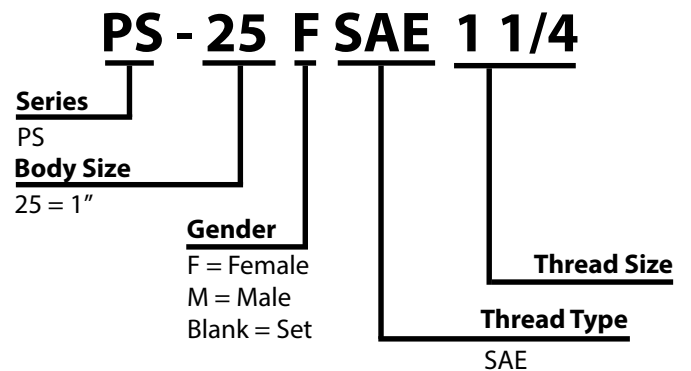


### Specifications

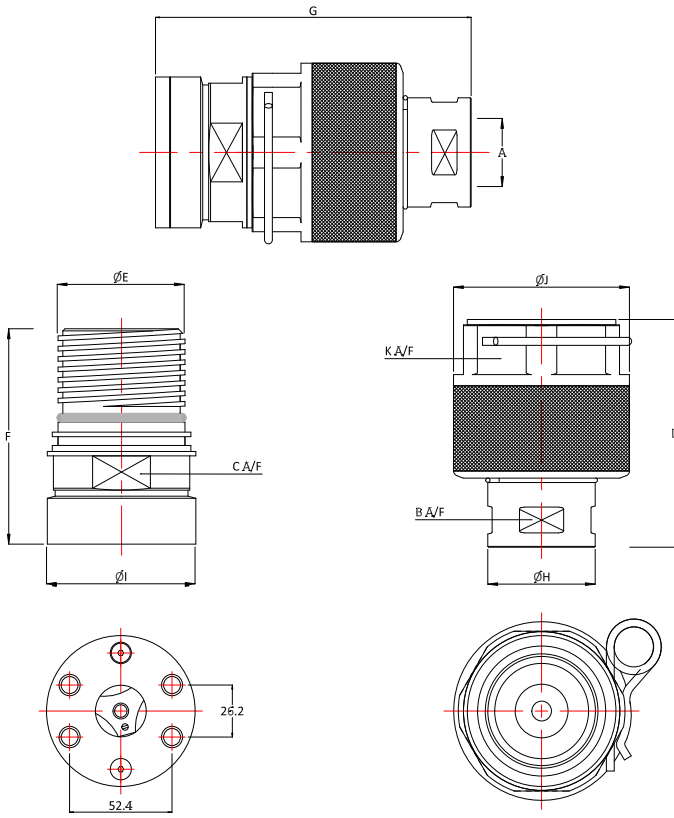
| Seal Material | Min. Temp |      | Max. Temp |       |
|---------------|-----------|------|-----------|-------|
|               | -20°C     | -4°F | 200°C     | 392°F |
| FKM seals*    |           |      |           |       |



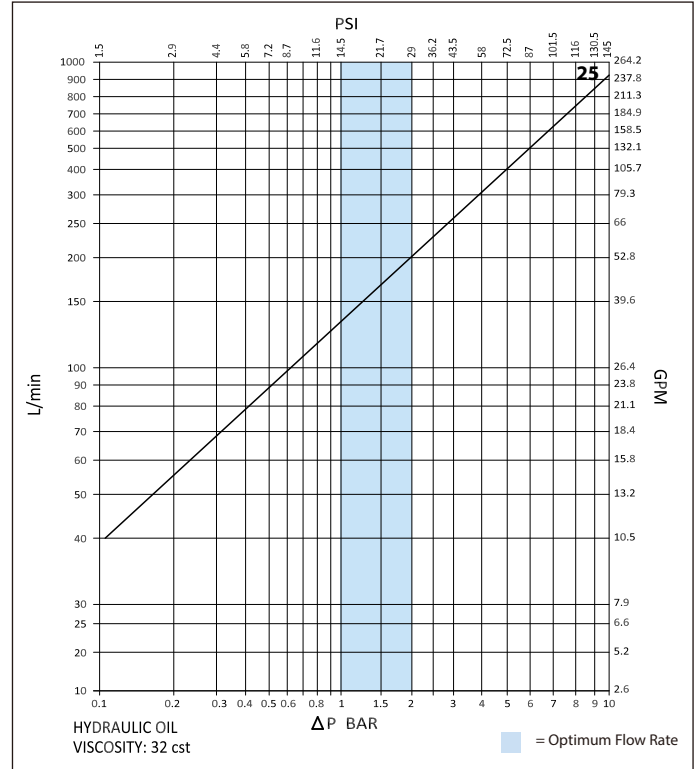
### Product Number Naming Rules



**Drawing**



**Pressure Drop Characteristics**



| Size  | Thread Size (A) | B                    | C   | K   | D     | ØE  | F     | G   | ØH  | ØI | ØJ  | Maximum Working Pressure | Burst Pressure (coupled) | Burst Pressure (Male) | Burst Pressure (Female) |
|-------|-----------------|----------------------|-----|-----|-------|-----|-------|-----|-----|----|-----|--------------------------|--------------------------|-----------------------|-------------------------|
|       |                 | Dimensions in mm     |     |     |       |     |       |     |     |    |     | Bar                      |                          |                       |                         |
|       |                 | Dimensions in inches |     |     |       |     |       |     |     |    |     | Psi                      |                          |                       |                         |
| PS-25 | 1 1/4"          | 50                   | 70  | 80  | 111.5 | 65  | 108.5 | 160 | 55  | 76 | 90  | 500                      | 2000                     | 2000                  | 2000                    |
|       |                 | 2                    | 2.8 | 3.1 | 4.4   | 2.6 | 4.3   | 6.3 | 2.2 | 3  | 3.5 | 7250                     | 29000                    | 29000                 | 29000                   |