

# VVS Series

## High pressure heavy duty screw connect couplers

### Introduction

AKJia's VVS Series screw connect couplers are designed for heavy duty applications involving very high pressures and severe pressure pulse conditions.

### Construction

- Carbon steel with trivalent plating
- Fitted with Nitrile seals
- Also available in AISI 316 (VVSS Series) stainless steel

### Features

- Screw connect design eliminates brinelling
- Can be connected with up to 50 bar residual pressure in the hydraulic circuit
- Bidirectional flow

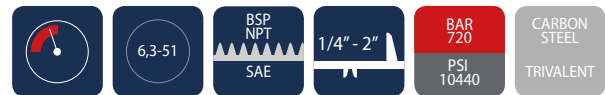
### Application

- Hydraulic jacks
- Hydraulic hammers
- Construction plant, mobile equipment, demolition and agricultural industries

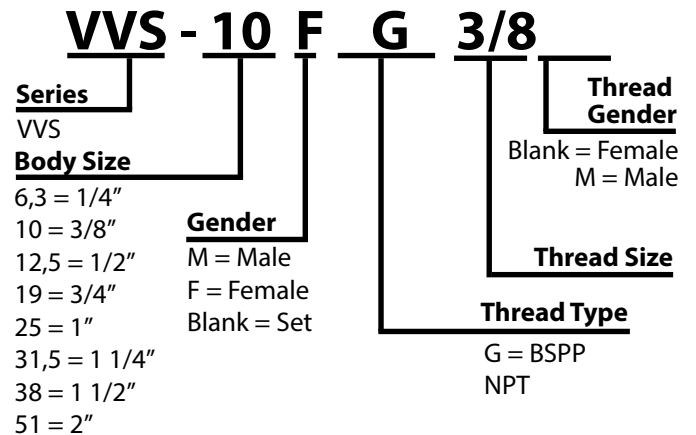


### Specifications

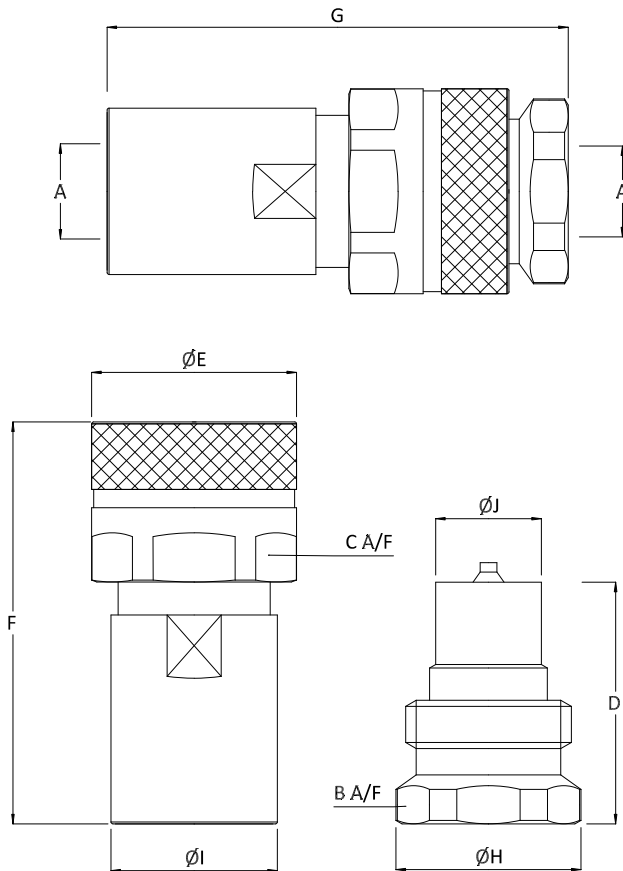
Seal Material	Min. Temp		Max. Temp	
	-40°C	-40°F	106°C	223°F
Nitrile seals*				



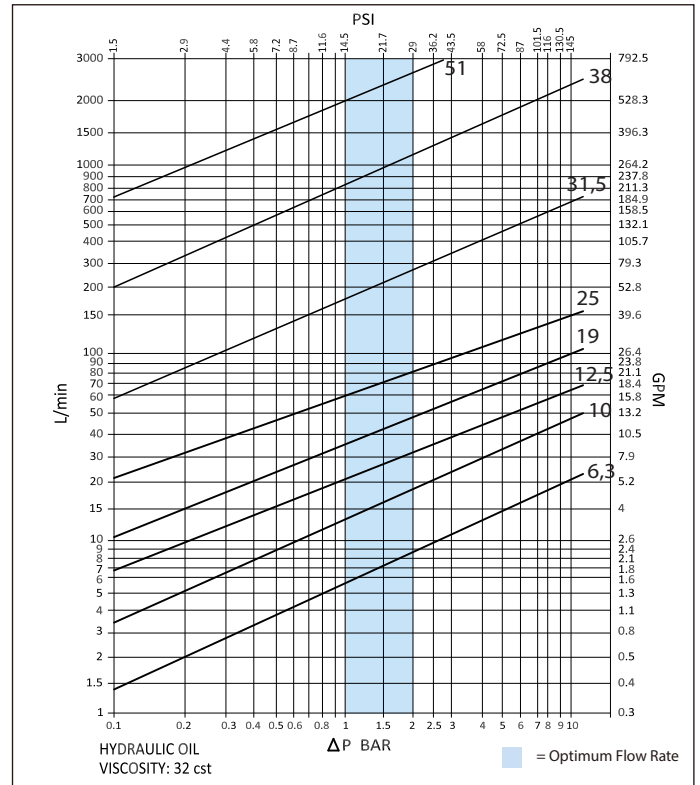
### Product Number Naming Rules



**Drawing**



**Pressure Drop Characteristics**



Size	Thread Size (A)	B	C	D	ØE	F	G	ØH	ØI	ØJ	Maximum Working Pressure	Burst Pressure (coupled)	Burst Pressure (Male)	Burst Pressure (Female)
Dimensions in mm											Bar			
Dimensions in inches											Psi			
VVS-6,3	1/4"	25	27	43	30	61.5	84.5	27	25	14	800	2500	2400	2400
		1	1.1	1.7	1.2	2.4	3.3	1.1	1	0.6	11600	36250	34800	34800
VVS-10	3/8"	32	36	48.5	39	69	89.5	35	32	19	750	2350	2850	2450
		1.3	1.4	1.9	1.5	2.7	3.5	1.4	1.3	0.7	10875	34075	41325	35525
VVS-12,5	1/2"	34	41	53	44	79	103	38	38	20.5	750	2180	2400	2180
		1.3	1.6	2.1	1.7	3.1	4.1	1.5	1.5	0.8	10875	31610	34800	31610
VVS-19	3/4"	46	50	63	54	97.5	121.5	48.5	44	28	700	2140	2120	2300
		1.8	2	2.5	2.1	3.8	4.8	1.9	1.7	1.1	10150	31030	30740	33350
VVS-25	1"	50	54.5	72.5	59	112.5	139	54	54	31.5	550	1960	1580	2220
		2	2.1	2.9	2.3	4.4	5.5	2.1	2.1	1.2	7975	28420	22910	32190
VVS-31,5	1 1/4"	65	74.5	86	80	139.5	167	70	69.5	44	550	2000	1780	1780
		2.6	2.9	3.4	3.1	5.5	6.6	2.8	2.7	1.7	7975	29000	25810	25810
VVS-38	1 1/2"	80	90	95	98	172	188	83	78.5	53.5	400	1480	1180	1290
		3.1	3.5	3.7	3.9	6.8	7.4	3.3	3.1	2.1	5800	21460	17110	18705
VVS-51	2"	110	123	118.5	127.5	160	228	115.5	105	82	350	1020	1300	1300
		4.3	4.8	4.7	5	6.3	9	4.5	4.1	3.2	5075	14790	18850	18850